

# MONTHLY MEMBERSHIP PROGRESS REPORT

LOCATION NEPAL

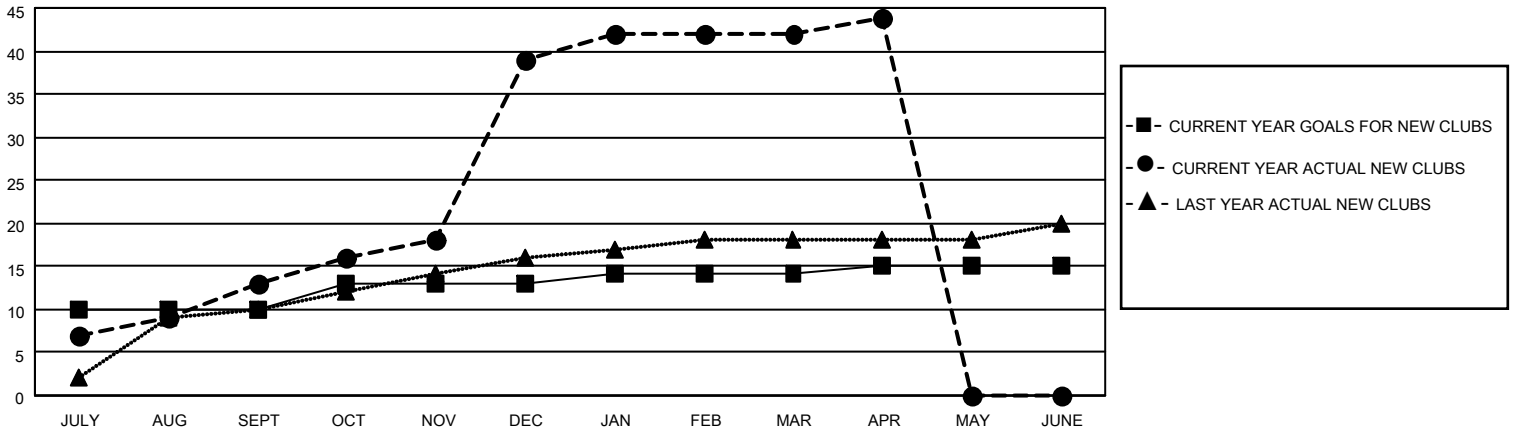
District 325A2

Results as of: 4/30/2021

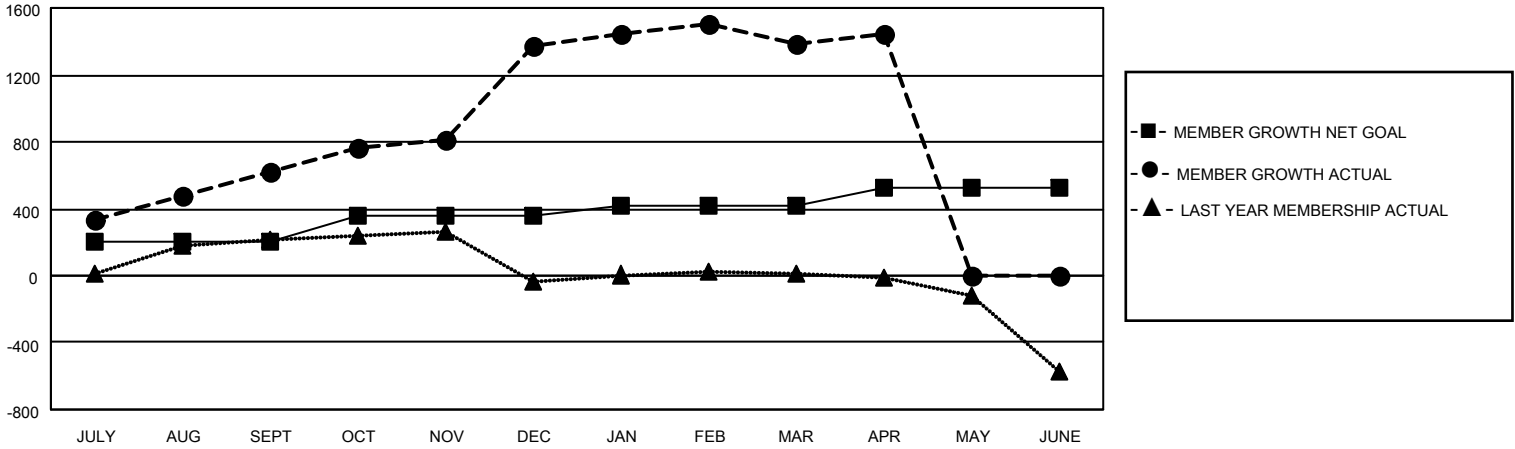
| Clubs                 |               |           |               |
|-----------------------|---------------|-----------|---------------|
| RESULTS FOR 2020-2021 |               |           |               |
| QUARTER               | NEW CLUB GOAL | NEW CLUBS | DROPPED CLUBS |
| JULY/AUG/SEPT         | 10            | 13        | 1             |
| OCT/NOV/DEC           | 3             | 26        | 0             |
| JAN/FEB/MAR           | 1             | 3         | 9             |
| APR/MAY/JUNE          | 1             | 2         | 0             |

| Members               |                        |                      |  |
|-----------------------|------------------------|----------------------|--|
| RESULTS FOR 2020-2021 |                        |                      |  |
| QUARTER               | MEMBER GROWTH NET GOAL | MEMBER GROWTH ACTUAL | DROPPED MEMBERS ACTUAL (including transfers) |
| JULY/AUG/SEPT         | 205                    | 742                  | 92   |
| OCT/NOV/DEC           | 156                    | 1006                 | 238  |
| JAN/FEB/MAR           | 55                     | 251                  | 203  |
| APR/MAY/JUNE          | 105                    | 71                   | 12   |

**GOALS AND ACTUAL NEW CLUBS CUMULATIVE**



**GOALS AND ACTUAL MEMBERS CUMULATIVE**



|                        |   |                                       |
|------------------------|---|---------------------------------------|
| DROPPED CLUBS: 10      | 157 CLUBS OF 241 ADDED 1 OR MORE NEW MEMBERS              | <u>GENDER DISTRIBUTION</u>            |
| <u>DROPPED MEMBERS</u> | <a href="#">CLICK HERE FOR CUMULATIVE MEMBERSHIP DATA</a> | MALE 4,316 (70.01%)                   |
| DECEASED 2             |   | FEMALE 1,849 (29.99%)                 |
| CLUB CANCELLED 145     |   | TOTAL FAMILY UNIT MEMBERS 3,733       |
| OTHER 398              |   | FAMILY MEMBERS PAYING HALF DUES 2,504 |
| <b>TOTAL 545</b>       |   |                                       |